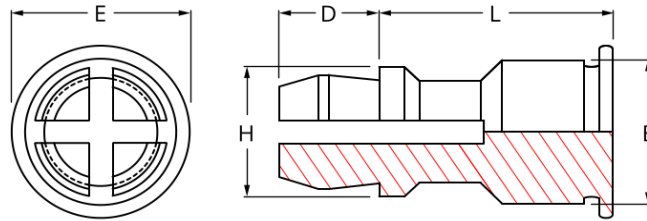
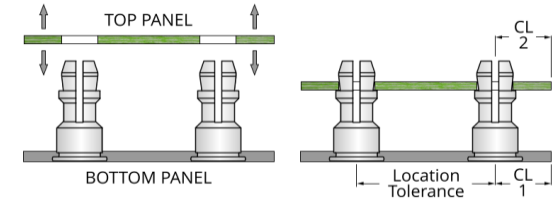


Self Clinching Quick Release Standoffs



Top panel is snapped into place and can be quickly removed by simply pulling the panel up and away from the standoffs. To reattach simply snap back into place.



Self Clinching Quick Release Standoffs									
Bottom Panel					Top Panel				
Hole Size	Minimum Panel Thickness	Panel Material	Min. CL 1 To Edge	Location Tolerance	Hole Size	Panel Thk Range	Panel Material	Minimum CL 2 To Edge	Maximum Hardness
+0.08 / -0.00	1.0	Metal	6.60	+ / - 0.13	+0.08/-0.0	1.0 - 1.8	Any	2.54	No Limit

H	D	E	B	Lengths (L) + / - 0.13								
+ / - 0.13	+/- 0.13	+/- 0.13	Max	8	10	12	14	16	18	20	22	25
4.78	3.58	6.35	5.39									

Material	Finish	Maximum Panel Hardness
Steel	Electro Zinc Plated 	60 HRB
Stainless Steel	A2	70 HRB
Aluminium		50 HRB

INFORMATION AND DRAWINGS PROVIDED ARE FOR REFERENCE ONLY